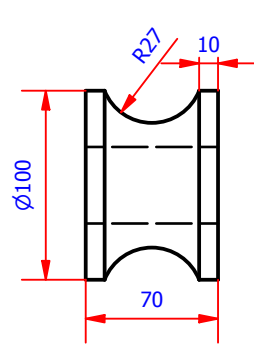
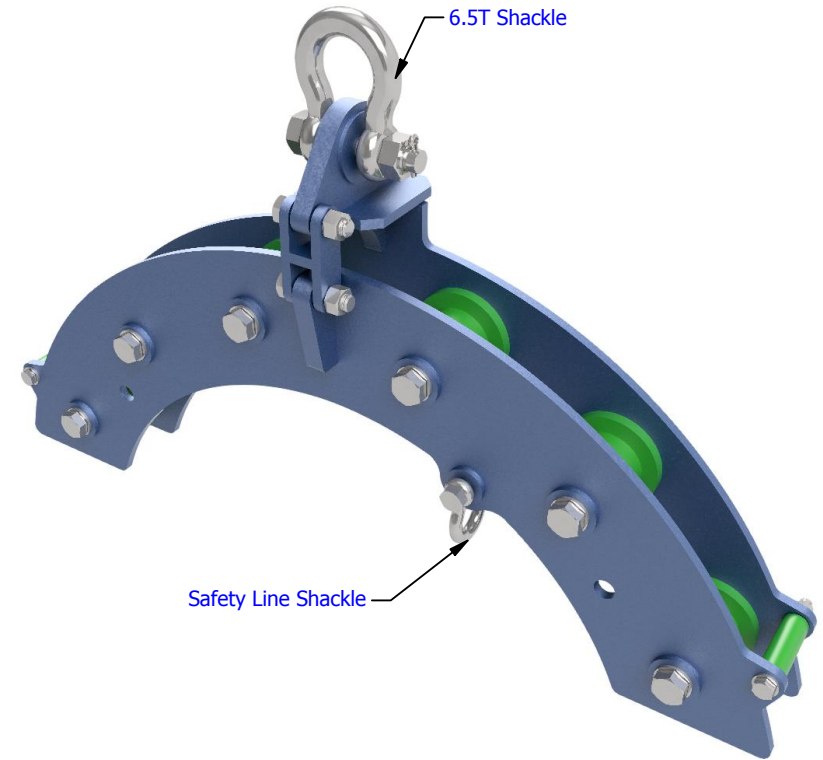
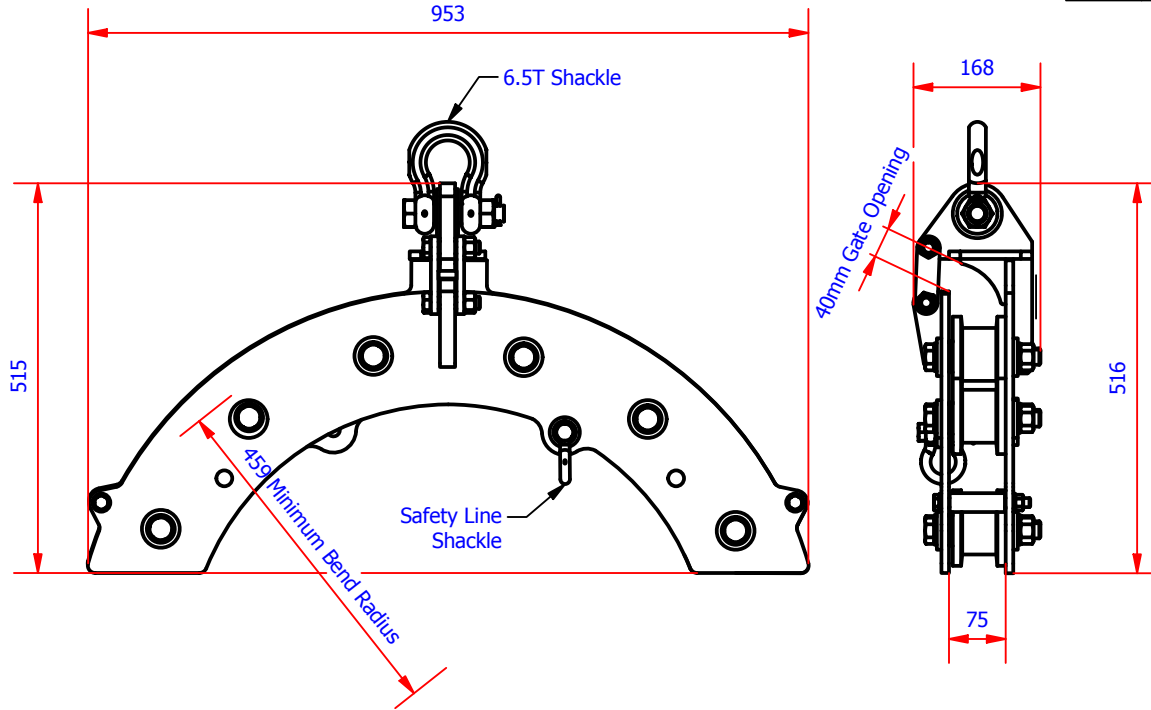
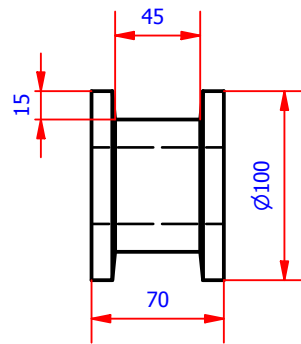


REVISION HISTORY

REV	BY	DESCRIPTION	DATE	CHKD	APPR	EX APPR	CL APPR
2	DB	Added Umbilical roller to drawing	04.11.14	DB	NH	N/A	N/A



Umbilical Oilon Roller



Control Line Oilon Roller

Notes
 Design Standard DNV 2.22 and Lloyds LAME
 Model Number: 03-0306
 Connected to rig via 6.5T Shackle (Eye to Eye Swivel Optional Extra)
 Tare: 41kgs
 Max Line Pull 3T
 Max Head Pull 6T

This drawing is copyright© and is the property of Blue Manta International, and must not be reproduced or used without the express permission of Blue Manta International.		General tolerances UNO Steel fabrications: ± 3.00mm Machining: ± 0.25mm Concentric: ± 0.05mm Angular: ± 0.05mm	Machined corner radii. Inside: ± 0.50mm UNO Outside: ± 0.65mm UNO
Description: 3T 6T Sheave		<p>Third angle projection</p>	
Part no: 03-0306	Drawing No: BMD-256.S		
Client: Bluemanta	Scale: NTS @ A4		