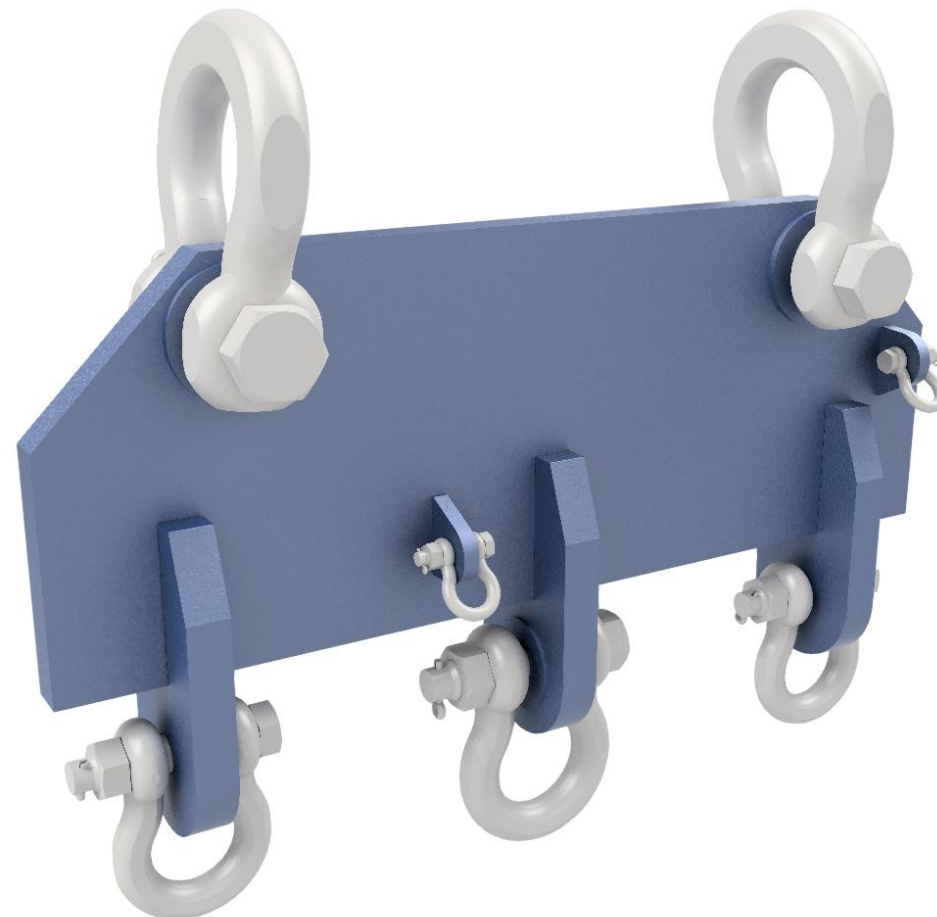
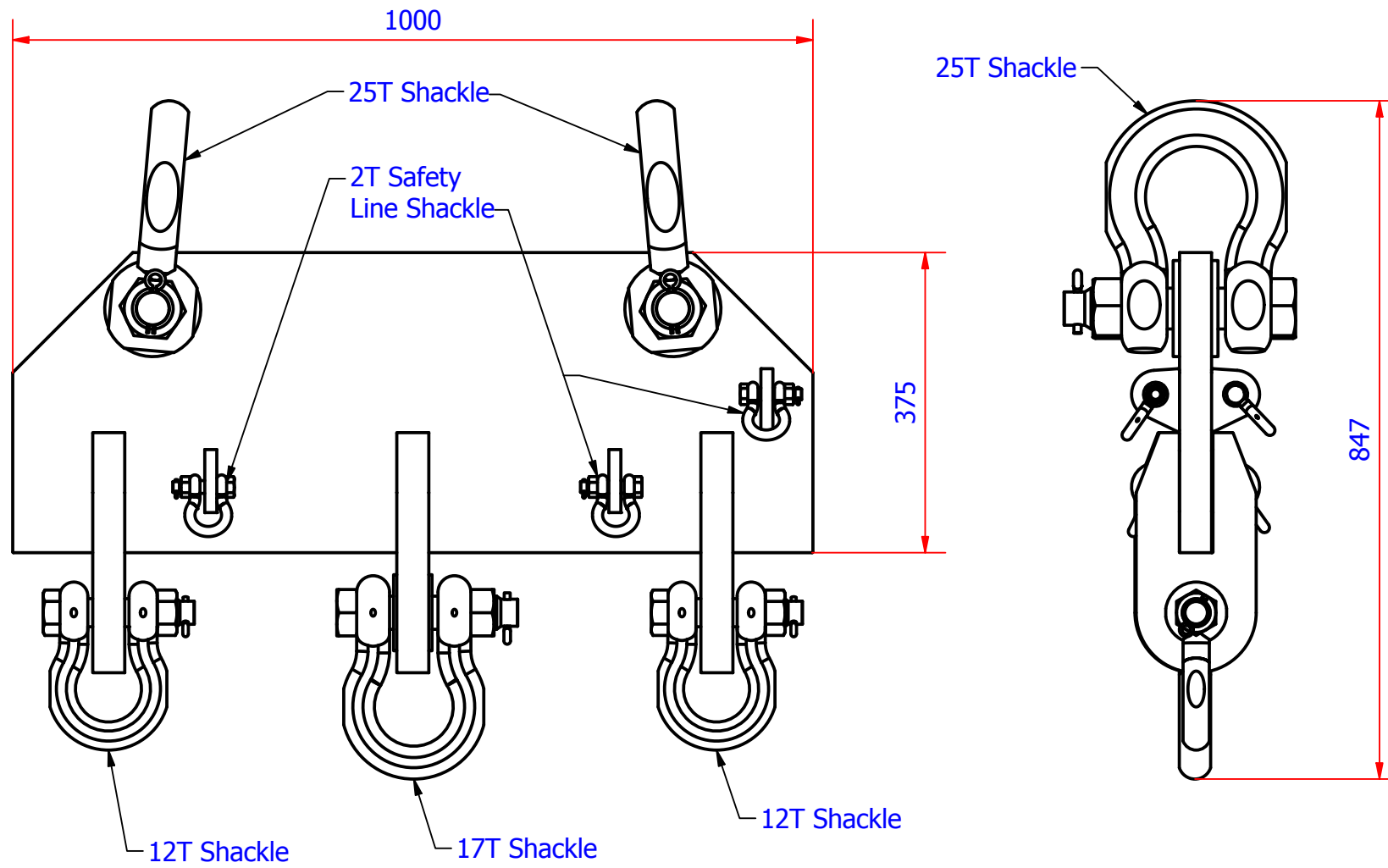


REVISION HISTORY

REV	BY	DESCRIPTION	DATE	CHKD	APPR	EXT	CL APP
1	RG	-	06.08.18			N/A	N/A



Notes:
 Built as Per DNV 2.22 and Lloyds L.A.M.E. CH3
 Tare Weight: 200 kg
 Max Load: 40T
 Part Number: 03-SB40-3

This drawing is copyright© and is the property of Blue Manta International, and must not be reproduced or used without the express permission of Blue Manta International.	General tolerances UNO Steel fabrications: ± 3.00mm Machining: ± 0.25mm Concentric: ± 0.05mm Angular: ± 30mins	Machined corner rads. Inside: ± 0.50mm UNO Outside: ± 0.65mm UNO
	Description: 40T SWL Spreader Beam - 3 Sheaves	
Part no: 03-SB-40-3	Drawing No: BMD-1755.S	
Client: Blue Manta	Scale: NTS@A3	

