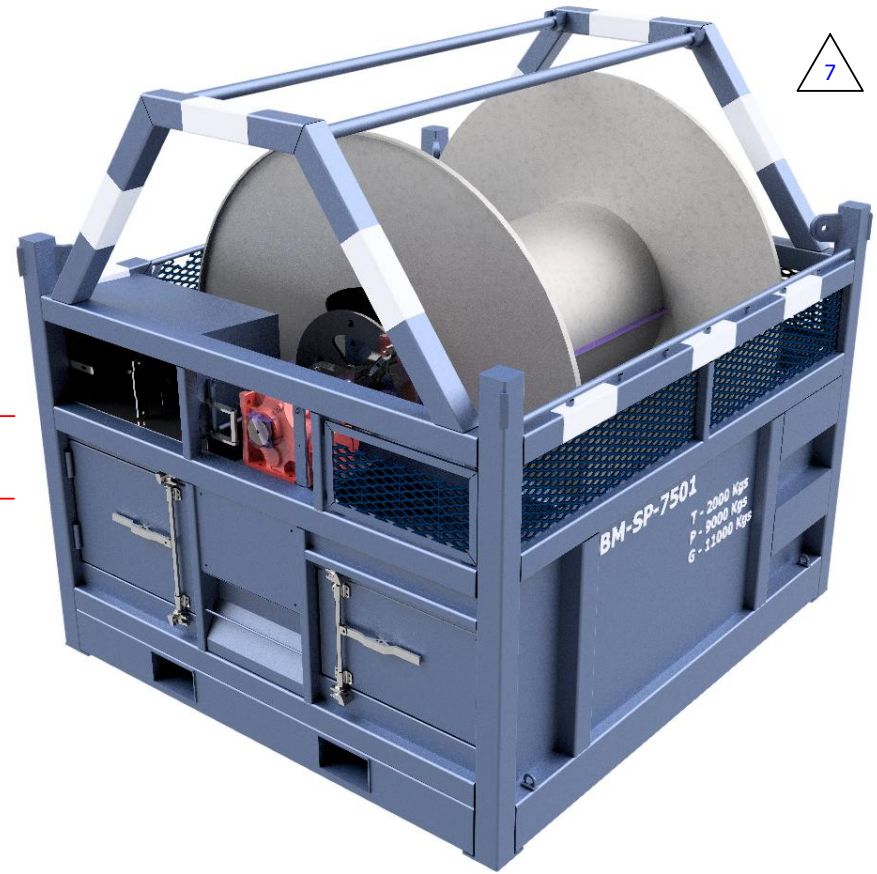
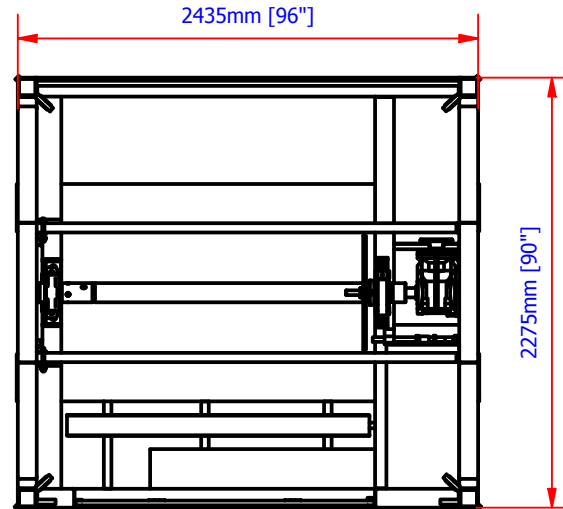
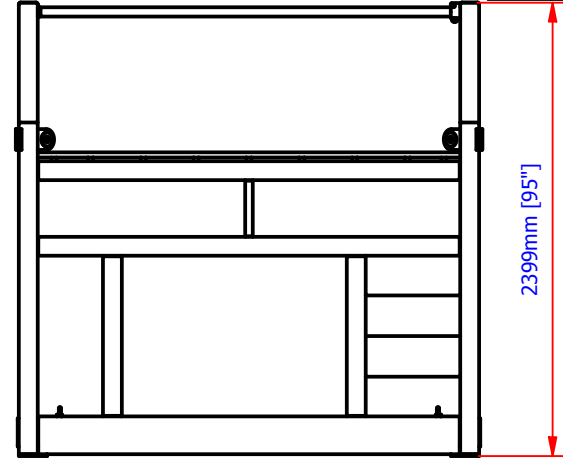
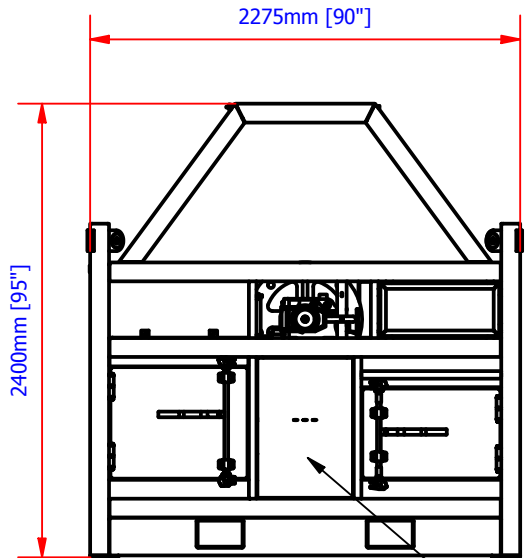
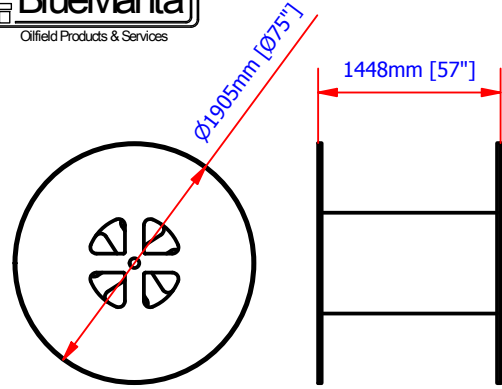


REVISION HISTORY

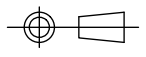
REV	BY	DESCRIPTION	DATE	CHKD	APPR	EXT APP	CL APP
7	DB	Changed Position of Pendant Control Connections, Updated Showcase to match.	08.04.16	DB	IH	N/A	N/A



MAX DRUM: 75" DIA X 57" W, 3" or 4" Shaft

Notes:
 Design Standard DNV 2.7-1
 Model Number: 02-7500
 Tare : 2,000 Kg
 S.W.L : 9,000 Kg
 Gross : 11,000 Kg

This drawing is copyright© and is the property of Blue Manta International, and must not be reproduced or used without the express permission of Blue Manta International.	General tolerances UNO Steel fabrications: ± 3.00mm Machining: ± 0.25mm Concentric: ± 0.05mm Angular: ± 0.05mm	Machined corner rads. Inside: ± 0.50mm UNO Outside: ± 0.65mm UNO
	Description: 75" Spooling Unit Sales	

Part no: 02-7500	Drawing No: BMD-283.S	 Third Angle Projection
Client: Blue Manta	Scale: NTS @ A4	