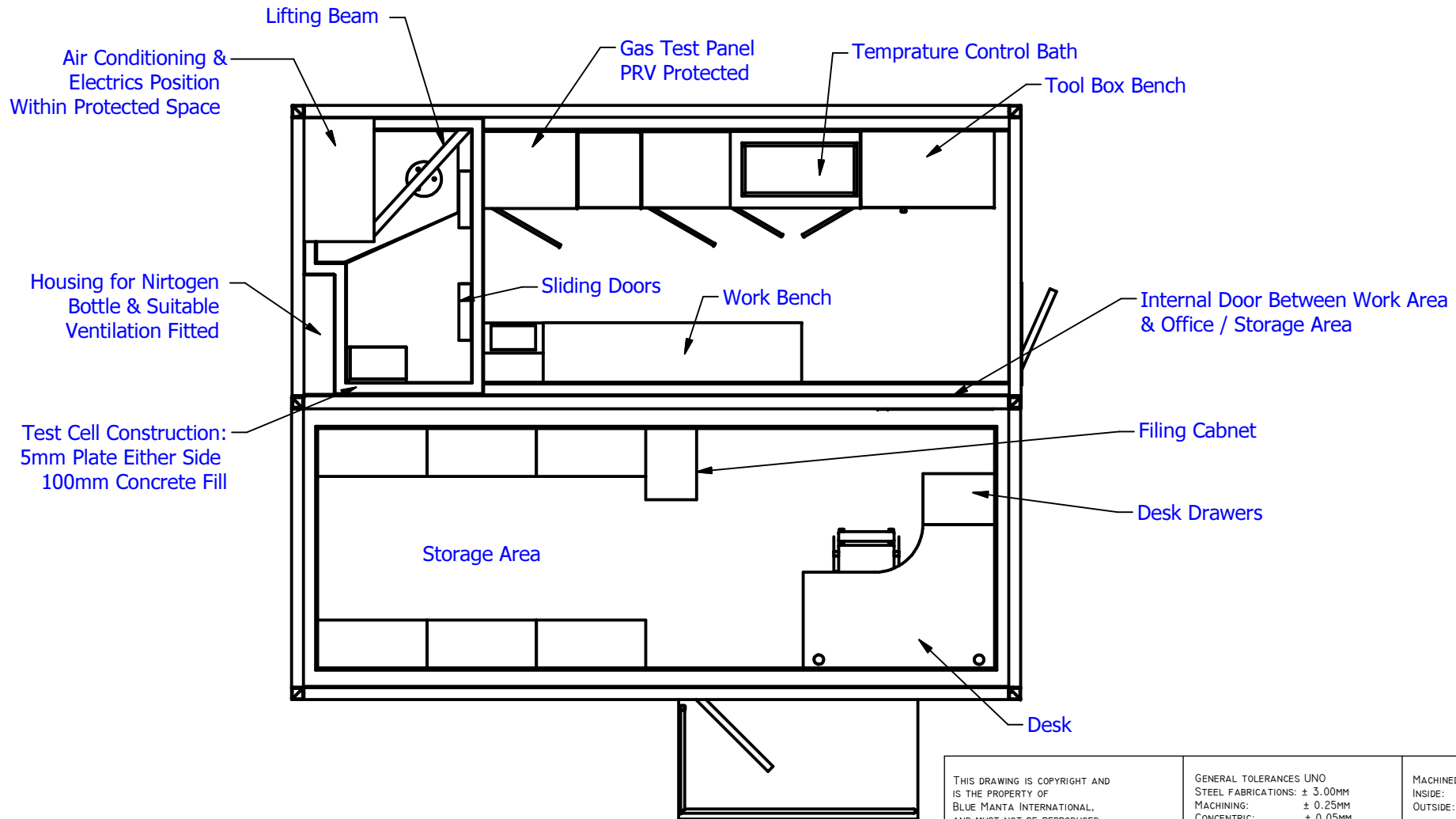



| REVISION HISTORY | | | | | |
|------------------|------------|-------------|----------|--------|----------|
| REV | REVISED BY | DESCRIPTION | APPROVED | STATUS | DATE |
| 1 | BR | - | NH | SALES | 10.08.11 |



| | | | | | |
|---|--|--|--|---|--|
| THIS DRAWING IS COPYRIGHT AND IS THE PROPERTY OF BLUE MANTA INTERNATIONAL, AND MUST NOT BE REPRODUCED OR USED WITHOUT THE EXPRESS PERMISSION OF BLUE MANTA INTERNATIONAL. | | GENERAL TOLERANCES UNO STEEL FABRICATIONS: ± 3.00MM MACHINING: ± 0.25MM CONCENTRIC: ± 0.05MM ANGULAR: ± 0.05MM | | MACHINED CORNER RADS. INSIDE: ± 0.50MM UNO OUTSIDE: ± 0.65MM UNO | |
| DRAWING TITLE: GAS LIFT CONTAINERS | | DRAWING No: BMD-343.IS | |  THIRD ANGLE PROJECTION | |
| CLIENT: WEATHERFORD | | REV NO: 1 | | | |
| CLIENT APPROVAL: N/A | | SCALE: NTS @ A4 | | SHEET OF: 1 OF 1 | |
| DATE: | | APPROVED BY: NH | | DATE: 10.08.11 | |
| DRAWN BY: B. ROBERTSON | | CHECKED BY: IH | | | |

