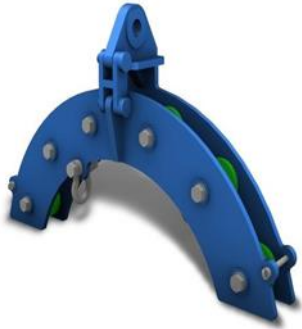


<b>MODEL NO.</b>	<b>Control Line</b>	<b>Pull</b>	<b>Gate Access</b>	<b>Swivel</b>
03-0204	Bare or Encapsulated Control Line	2 Tonne Line Pull 4 Tonne Head Fitting	No	Yes
03-0208-2	Bare or Encapsulated Dual Control Lines	2 x 2 Tonne Line Pull 8 Tonne Head Fitting	Yes	Optional Extra
03-0306	Bare, Encapsulated and Flat Pack Control Line	3 Tonne Line Pull 6 Tonne Head Fitting	Yes	Optional Extra
03-0408	Bare or Encapsulated and Flat Pack Control Line	4 Tonne Line Pull 8 Tonne Head Fitting	Yes	Optional Extra
03-0510	Bare or Encapsulated and Flat Pack Control Line	5 Tonne Line Pull 10 Tonne Head Fitting	Yes	Optional Extra
03-0612	Bare or Encapsulated and Flat Pack Control Line	6 Tonne Line Pull 12 Tonne Head Fitting	Yes	Optional Extra
03-0816	Bare or Encapsulated and Flat Pack Control Line	8 Tonne Line Pull 16 Tonne Head Fitting	Yes	Optional Extra
03-1020	Bare or Encapsulated and Flat Pack Control Line	10 Tonne Line Pull 20 Tonne Head Fitting	Yes	No
03-40-0306	Bare of Encapsulated and Flat Pack Control Line	3 Tonne Line Pull 6 Tonne Head Fitting Suitable for up to -40° c working conditions	Yes	Optional Extra



The Blue Manta International Sheave Wheel is specifically designed for accommodating and engaging all types and sizes of Control Line.

○ The Horseshoe Type Sheave Wheels are ideal for directing Control Line from the Spooling Unit into the well.

All our Sheave Wheels are designed and tested in accordance with DNV 2.22 and Lloyds Code for Lifting Appliances in a Marine Environment (CLAME).

**Features:**

- Single pin opening to allow easy cable installation and removal c/w Pin Safety Cable
- Guide Pins front and rear easy access c/w Pin Safety Cable
- Safety Line facility c/w Shackle (Customer to supply safety Wire Rope Sling)
- Teflon rollers can be manufactured to suit clients specific requirements



**Blue Manta International Limited**  
**5 Kirkton Avenue, Pitmedden Road Industrial Estate, Dyce, Aberdeen.**  
**AB21 0BF**  
**Phone 01224 775576 Fax 01224 775596**

